

CJ SIGNS

BE NOTICED!

VISIBLE
SATISFACTION
THROUGH
ENTHUSIASTIC
EXCELLENCE



COMPANY PROFILE

WHO WE ARE

CJ SIGNS (PROPRIETOR: CHRISTO AND JANIÉLE SIGNS CC) WAS ESTABLISHED IN 1998, IT STARTED AS A FAMILY BUSINESS AND OVER THE YEARS HAS DEVELOPED INTO A SMALL TO MEDIUM SIZE COMPANY.

WE OFFER A WIDE RANGE OF SIGNAGE PRODUCTS TO ENHANCE OUR CUSTOMER'S BUSINESS AND IMAGE.

OUR CORE VALUE IS CUSTOMER SATISFACTION, WE STRIVE TO ACHIEVE THIS THROUGH HIGH QUALITY PRODUCTS AND WORKMANSHIP, ON TIME DELIVERY AND MARKET RELATED PRICES.

OUR CUSTOMER BASE VARIES FROM SMALL SHOPS AND BUSINESSES TO CORPORATE COMPANIES THROUGHOUT SOUTH AFRICA. WE ALSO SUPPLY A SERVICE TO SIGN AGENTS AND OTHER SIGNAGE COMPANIES WHO DO NOT HAVE ALL THE FACILITIES.

CJ SIGNS WILL GET YOUR BUSINESS NOTICED!

OUR MAIN FOCUS -

CLIENT SATISFACTION.

"YOU THE CUSTOMER ARE OUR SINGLE MOST IMPORTANT ASSET"

THIS IS NOT A CLICHÉ, BUT A CORE VALUE THAT WE ATTEND TO EVERY DAY.

THE ONE-STOP SIGNAGE COMPANY THAT PUTS YOUR ARTWORK TOGETHER, MANUFACTURES ACCORDING TO YOUR NEEDS AND INSTALLS THE FINISHED PRODUCT.

CJ SIGNS IS BASED IN KEMPTON PARK WHERE MOST OF THE SIGNAGE IS PRODUCED ON OUR PREMISES. WE SUPPLY A SERVICE TO ANY AND ALL BUSINESSES THROUGHOUT SOUTH AFRICA.

OUR INSTALLATION TEAM IS WELL EQUIPPED TO DO RIGGING AND INSTALLATIONS OF SIGNS AS WELL AS MAINTENANCE AS AN AFTER SALES SERVICE

CJ
SIGNS
BE NOTICED!

PRODUCT CATALOGUE


INDEX

- | | |
|---------------------------------|----|
| 1. OUTDOOR SIGNAGE | 3 |
| 2. INDOOR SIGNAGE | 4 |
| 3. VEHICLE AND TRAILER BRANDING | 5 |
| 4. SAFETY SIGNS | 6 |
| 5. WINDOW FROSTING | 7 |
| 6. WALLPAPER | 8 |
| 7. CANVAS AND LABEL PRINTS | 9 |
| 8. INSTALLATION AND RIGGING | 10 |

OUR LOYAL CLIENTS




CONTACT US

 011 396 1345

 francois@cjsigns.com

 www.cjsigns.com

 <http://web.facebook.com/CJ-Signs-198354533563348/?ref=bookmarks>



DESCRIPTION:

WELL DESIGNED BUILDING SIGNAGE IS THE PERFECT WAY TO BE NOTICED!

WE CAN DESIGN, MANUFACTURE AND INSTALL A CUSTOM MADE SIGN TO YOUR SPECIFICATION. THIS BROCHURE ONLY FEATURES WHAT IS TRENDING RIGHT NOW, MANY OTHER OPTIONS ARE ALSO AVAILABLE.

SPECIFICATIONS:

1. PERSPEX CUT OUT LETTERS: FABRICATED TO GIVE A 3D EFFECT, OR A FLAT FACE. STAINLESS STEEL AND MILD STEEL ARE ALSO A GOOD ALTERNATIVE CHOICE. OPTIONS FOR LED OR NEON LIGHTING ARE AVAILABLE TO LIGHT UP YOUR BRAND.
2. LIGHT BOXES: PERSPEX FACE OR BACKLIT PVC FACE. THIS IS A POPULAR CHOICE FOR BRAND, PRODUCT OR SERVICE ADVERTISING THAT NEEDS TO BE HIGHLY VISIBLE FROM A DISTANCE.
3. PVC STRETCH BANNER WITH FULL COLOUR PRINT: THE PERFECT CHOICE FOR LARGE FORMAT BRANDING WHICH IS COST EFFECTIVE AND EFFICIENT.



DESCRIPTION:

WELCOME YOUR CLIENT TO YOUR OFFICE SPACE WITH AN EYE CATCHING QUALITY SIGN THAT MAKES A STRONG STATEMENT ABOUT YOUR BRAND AND COMPANY IMAGE.

A VAST VARIETY OF OPTIONS IN LIGHTING AND SUBSTRATE ARE AVAILABLE, WHICH LEAVES YOU AMPLE ROOM TO BE CREATIVE WITH YOUR LOOK AND BRAND MESSAGING.

SPECIFICATIONS:

1. CUT OUT STEEL/PERSPEX LETTERS:
WITH OR WITHOUT LIGHTING. LIGHTING WILL CREATE A HALO EFFECT WHICH WILL IMMEDIATELY CATCH YOUR CLIENTS EYE.
2. BRUSHED ALUMINIUM OR STAINLESS STEEL:
PROVIDES FOR AN UPMARKET PROFESSIONAL IMAGE.



DESCRIPTION:

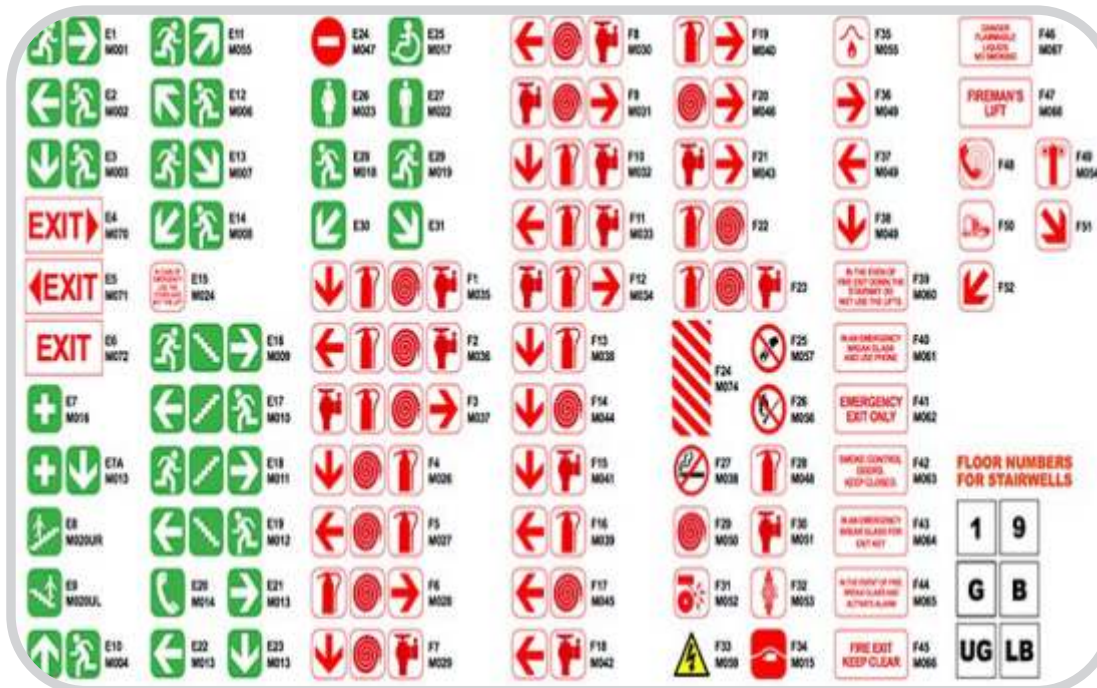
TRANSFORM YOUR VEHICLE INTO A MOBILE BILLBOARD FOR YOUR BUSINESS.

SEND A STRONG STATEMENT FOR YOUR BRAND MESSAGING.

ADVERTISE YOUR PRODUCTS AND SERVICES

SPECIFICATIONS:

1. TOP QUALITY VINYLs WITH LAMINATE FOR UV PROTECTION.
2. DESIGNED TO YOUR SPECIFICATION AND PROFESSIONALLY APPLIED



DESCRIPTION:

THIS MIGHT BE A LAWFUL REQUIREMENT BUT THAT DOES NOT MEAN THAT SAFETY SIGNAGE CANNOT BE TRENDY AND CLASSY.

VARIOUS OPTIONS ARE AVAILABLE TO MAKE YOUR FIRE AND SAFETY SIGNAGE BE CUT ABOVE THE REST.

SPECIFICATIONS:

1. CONVENTIONAL FIRE AND SAFETY SIGNAGE PHOTO LUMINESCENT VINYL WITH FULL COLOUR PRINT ON ABS AND ALUMINIUM FRAME FABRICATED TO FIRE SAFETY REGULATIONS
(SABS CERTIFICATION AVAILABLE)
2. ALTERNATIVE OPTIONS FOR A MORE TRENDY LOOK ARE PHOTO LUMINESCENT VINYL ON A GLASS PANEL OR PERSPEX WITH A PROFILE CUT DIAGONALS.



DESCRIPTION:

THE PERFECT SOLUTION FOR SHOP FRONT ADVERTISING AND BRAND AWARENESS. FOR BOTH OUTDOOR AND INDOOR USE. DESIGN YOUR OWN LOOK AND FEEL.

FROSTED VINYL IS ALSO A GREAT IDEA TO DEVIDE OFFICE SPACE TO CREATE SOME PRIVACY IN BOARDROOM SPACE.

SPECIFCATIONS:

1. A VARIETY OF VINYL OPTIONS ARE AVAILABLE TO SUIT THE SPECIFIC NEED.
2. CONTRA VISION
ISOLATE YOUR PRIVATE SPACE WITHOUT BLOCKING THE VIEW OUTSIDE.
3. MIRROR IMAGE VINYL
FOR COMPLETE BLOCK OUT
4. PRINTABLE SANDBLAST/FROSTED VINYL APPLIED TO GLASS WINDOWS



DESCRIPTION:

THIS IS THE PERFECT INDOOR SOLUTION TO SPICE UP THOSE DULL OFFICE WALLS.

DESIGNED AND PRINTED TO YOUR SPECIFICATION. ALSO ALLOWS FOR BRAND MESSAGING AND ADVERTISING.

SPECIFICATIONS:

1. HIGH QUALITY PRINTABLE AND SELF ADHESIVE WALLPAPER AND VINYL. PROFESSIONALLY APPLIED TO PAINTED OR PREPARED SMOOTH SURFACE.



DESCRIPTION:

BLOCK MOUNT WALL ART FOR YOUR OFFICE OR HOME. CONVEY A BRAND MESSAGE OF SIMPLY CREATE A WARM ENVIRONMENT WITH PRINTS DESIGNED WITH YOUR LOOK AND FEEL IN MIND.

PRODUCT OR ADVERTISING LABELS DIGITALLY PRINTED TO SIZE AND DESIGN.

SPECIFICATIONS:

1. PRINTABLE CANVAS BLOCK MOUNT OVER WOODEN FRAME. DESIGNED AND SIZED TO YOUR SPECIFICATION
2. VINYL STICKERS WITH FULL COLOUR PRINT DESIGNED AND PRINTED TO YOUR DESIGN AND SIZE.



DESCRIPTION:

LARGE SCALE BUILDING SIGNS AND PYLONS. INVARIABLY REQUIRES EXPERIENCED RIGGERS TO INSTALL THE SIGN SAFELY AND SECURELY.

WE PROVIDE A TURNKEY SERVICE FROM DESIGN AND CAST OF CONCRETE FOUNDATIONS, STEEL FABRICATION OF PYLONS AND FRAMES, CONNECTION OF LED, NEON AND FLORESCENT LIGHTS, TO FINAL RIGGING AND INSTALLATIONS.

WORKING AT HEIGHTS:

OUR TEAM OF RIGGERS ARE DULY QUALIFIED AND EQUIPT TO OPERATE THE FOLLOWING:

1. CHERRY PICKERS
2. CRANES
3. SCAFFOLDING
4. LADDERS
5. ROPE ACCESS

CJ SIGNS

BE NOTICED!



CONTACT US



011 396 1345



francois@cjsigns.com



www.cjsigns.com



<http://web.facebook.com/CJ-Signs-198354533563348/?ref=bookmarks>